

BASE assembly

If you are missing any items listed on the following page, please e-mail Customer Service at customerservice@selectcomfort.com or call the number on the back cover.

TROUBLESHOOTING

For answers to some common questions regarding your base, see the Frequently Asked Questions at the end of this manual.

" I assembled the Sleep Number bed by myself. My wife was in doubt at first, but, after sleeping one night, she said, it was magic how well she slept without back pain. Now we sleep longer and more comfortably than with any previous mattress we've owned."

- C. Clark S., Tucson, AZ

BEFORE YOU BEGIN

- ▶ **Carefully check the contents of your base boxes. Each component is clearly labeled with the part name and part number.**
- ▶ **Decide where to put your new bed**
- ▶ **Make sure there's an electric power source nearby for use with your Firmness Control™ System**
- ▶ **Assemble your bed frame if you have one**

Your base should be assembled directly onto your bed frame or on the floor. Some bed frames have slats that run from one side of the bed to the other. If your bed frame has slats, position the slats evenly to support the base. If your bed frame has fewer than three slats, we recommend adding additional slats to ensure adequate support for your base.

Caution: With some styles of bed frames, the base length may extend beyond the frame's support legs. This situation makes it possible for the frame to tip when significant weight is placed at the foot of the bed. Please use caution when sitting or placing weight on the foot of the bed when using these types of frames.

▶ King base

The King base consists of two Twins side by side. Complete the assembly of one unit, assemble the second, then place side by side on the bed frame.



Note: Texture and surface appearance may vary.

sleep  number.



QUANTITY

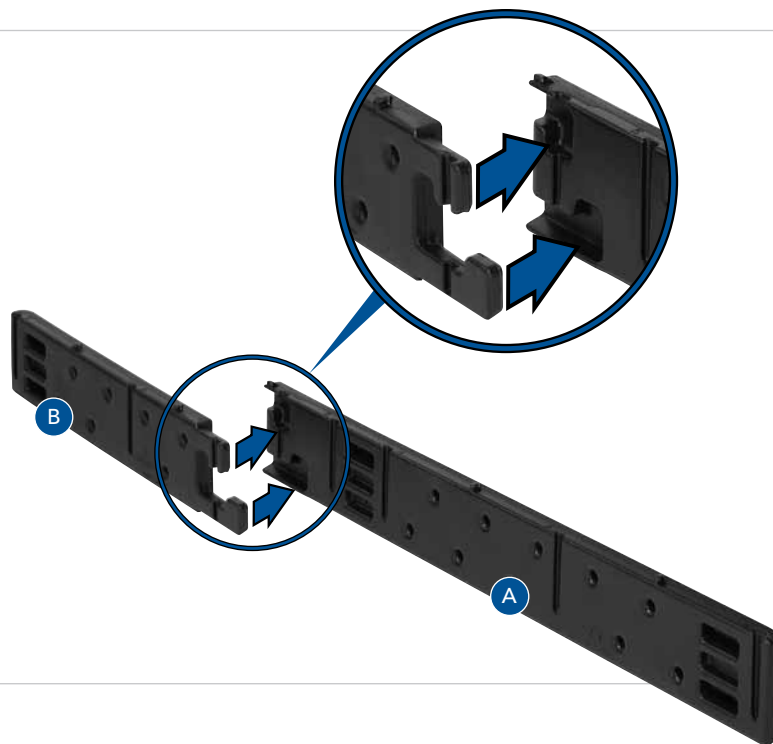
| | | Twin | Full | Queen | King |
|--|--|--------|--------|--------|--------|
|  <p>Side Rails Texture and surface appearance may vary</p> | | 2 each | 2 each | 2 each | 4 each |
|  <p>Support / End Beams Texture and surface appearance may vary</p> | | 6 | 6 | 6 | 12 |
|  <p>Deck Panels Texture and surface appearance may vary</p> | | 2 | 4 | 4 | 4 |
|  <p>Pin Components</p> | | 2 | 2 | 2 | 4 |
|  <p>Fabric Coverlet Packed in the mattress box Shown as packaged</p> | | 1 | 1 | 1 | 1 |
| <p><i>Expanded Queen only</i></p>  <p>Corner Brackets Packed in the mattress box</p> | | 0 | 0 | 4 | 0 |

BASE assembly

1 CONNECT SIDE RAILS

Push the components labeled A side rail and B side rail together.

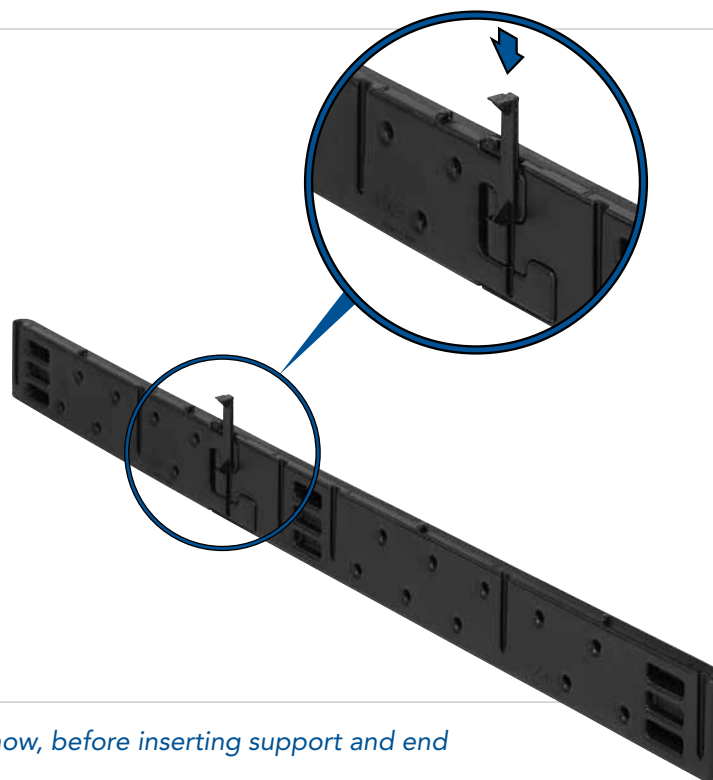
Joints fit tightly. Push firmly.



2 INSERT PIN

Slide pins in, "T" end up.

Push firmly.



If you've purchased base legs, install them now, before inserting support and end beams. (See package for instructions.)

3 INSERT SUPPORT/ END BEAMS

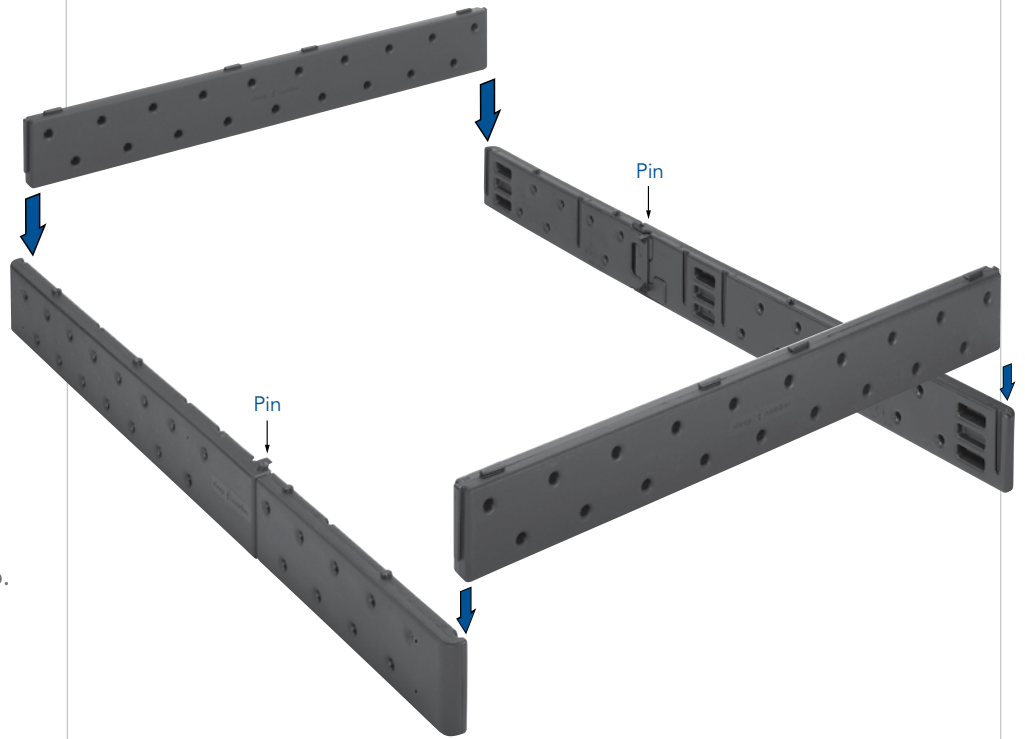
For Twin, Queen and Eastern King beds:

- insert support beams with tabs up and textured side out.

For Full and California King beds:

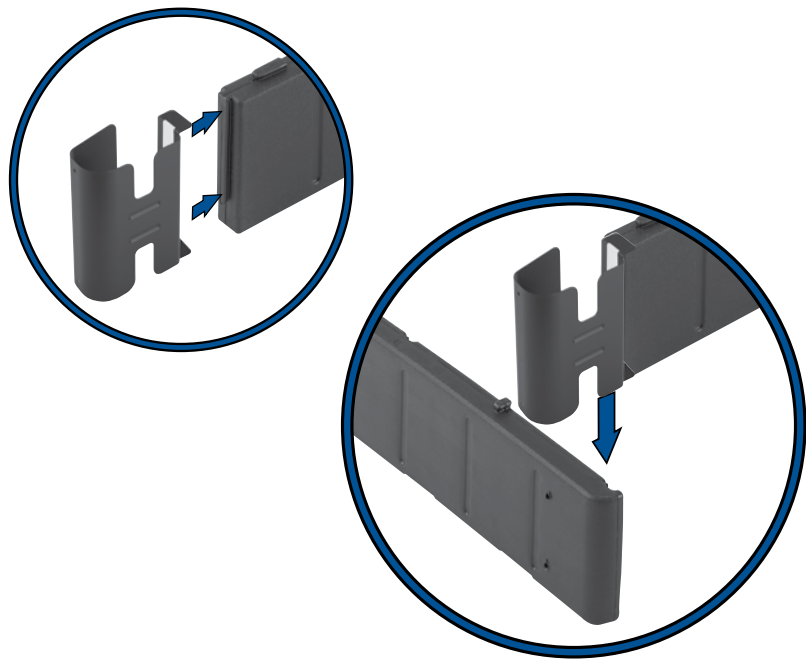
- insert labeled end beams followed by remaining support beams with tabs up.

Joints fit tightly. Push firmly until top is flush.



Expanded Queen beds only

Attach a corner bracket over each end before connecting to the side rail.

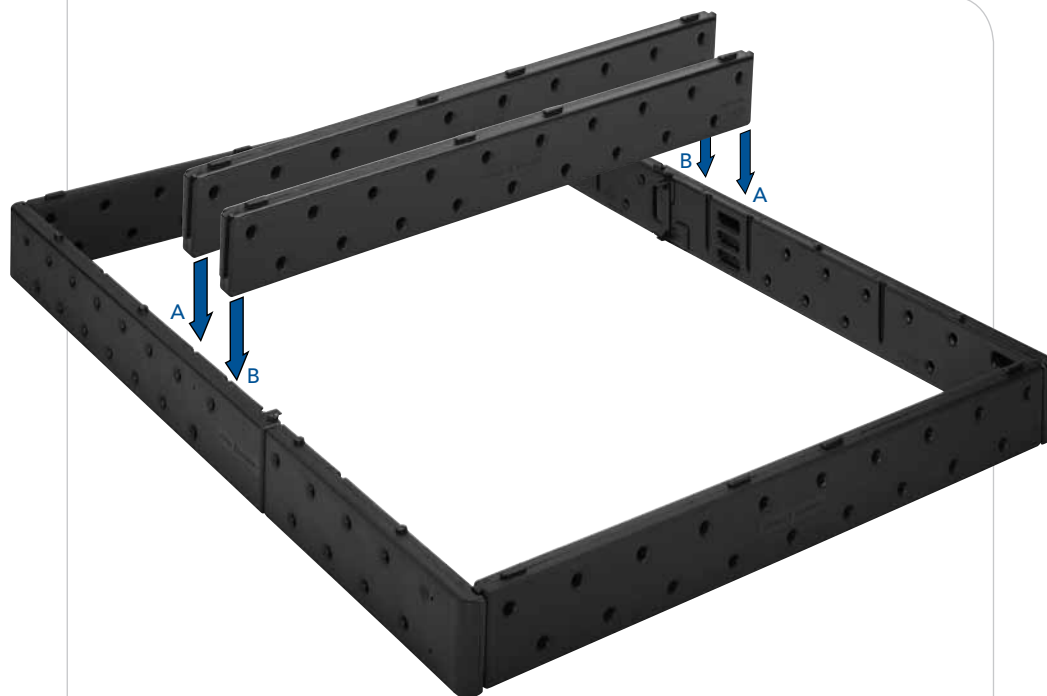


BASE assembly

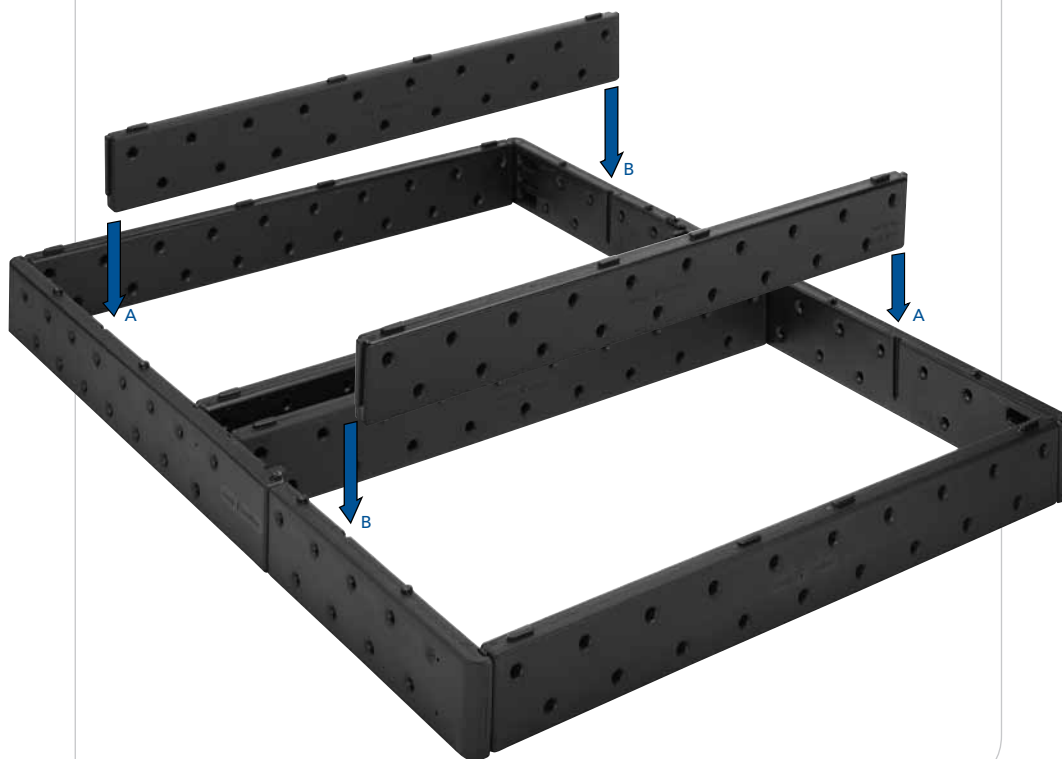
4 INSERT SUPPORT BEAMS

Slide the remaining support beams into the next set of channels.

Joints fit tightly, push firmly until top is flush.



Slide the remaining support beams into the next set of channels.



5

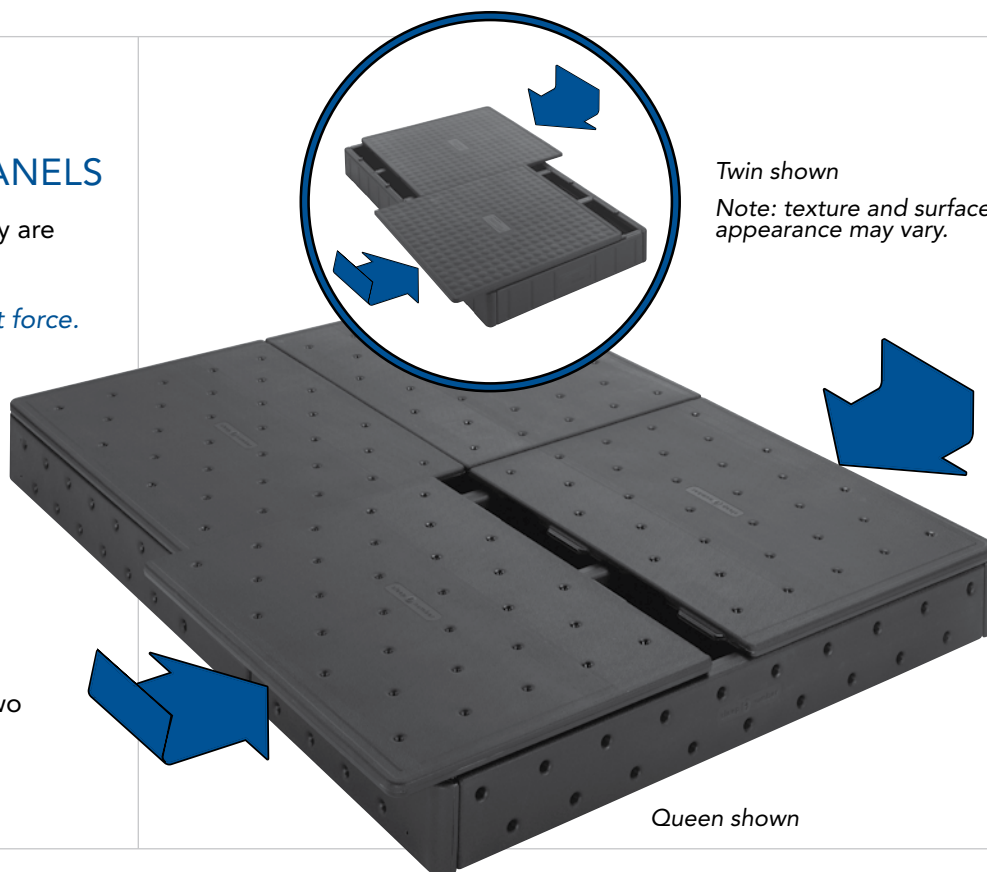
PLACE DECK PANELS

Slide panels in until they are flush on sides.

Panels fit snugly, do not force.

Reminder:

King base consists of two Twins side by side.

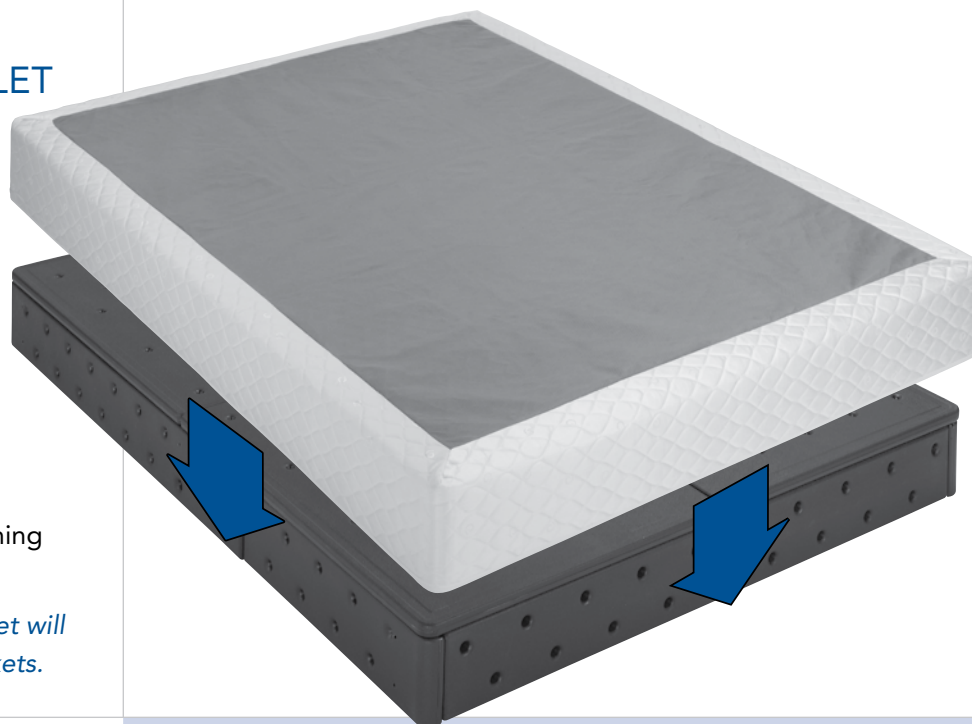


6

PUT ON COVERLET

Work on carefully, one corner at a time, positioning seam at head of bed.

Expanded Queen coverlet will go over the corner brackets.



YOU'RE DONE! NEXT STEP ► MATTRESS ASSEMBLY